







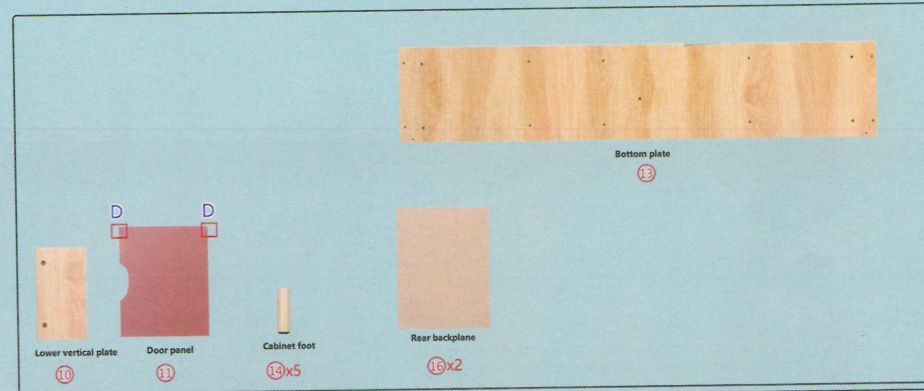
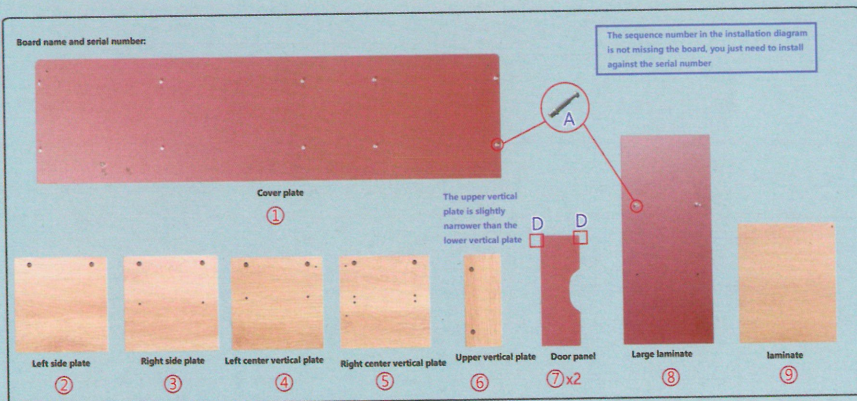
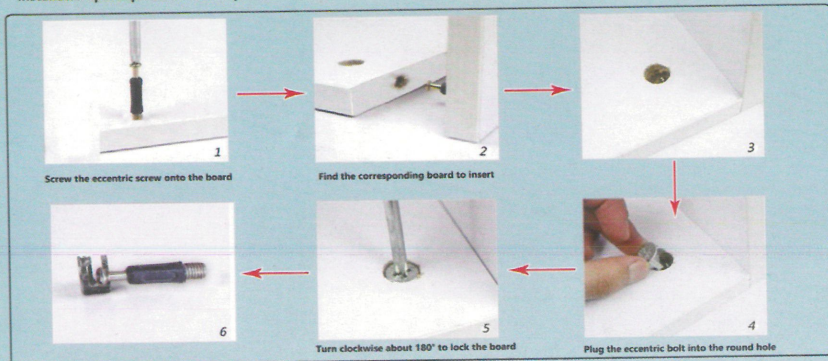
RT04

# F15D Three doors 120/140CM

					
A*12	B*12	C*20	D*9	E*5	F*20

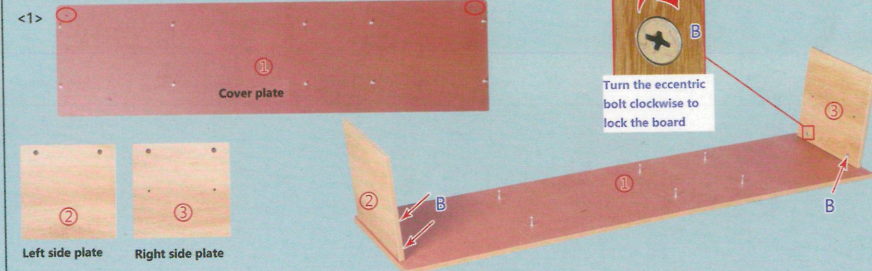
Tips: Tighten the screws by seven points during installation, and then tighten them after all is completed!

Installation principle of eccentric parts:



Step 1: Complete the installation

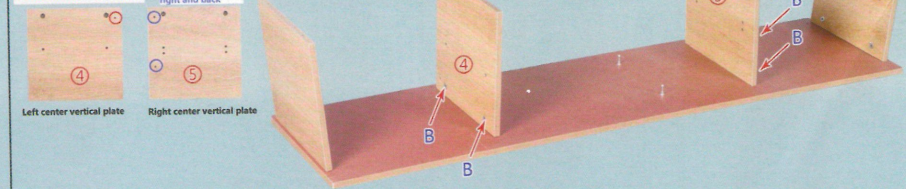
The hole is facing up and back



<2>

The hole is left and back down

The hole is to the right and back



<3>

The upper vertical plate is slightly narrower than the lower vertical plate

