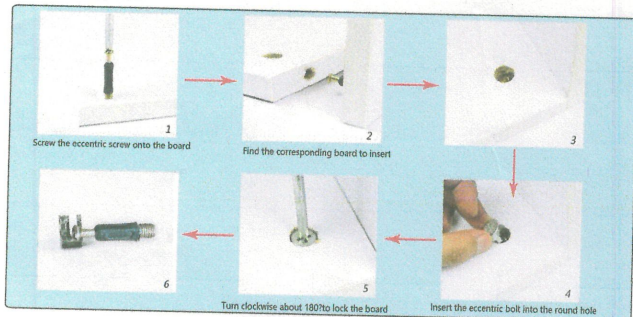


Dresser D27D upgrade installation diagram

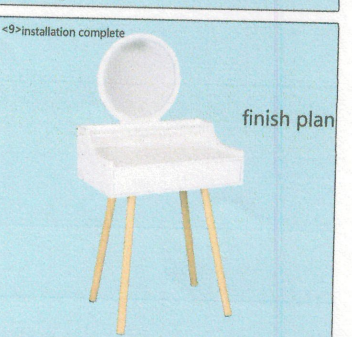
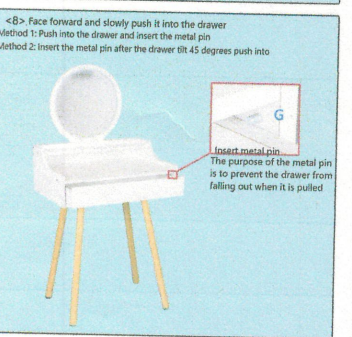
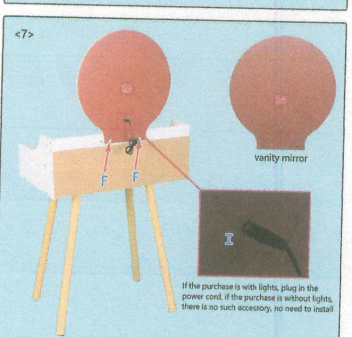
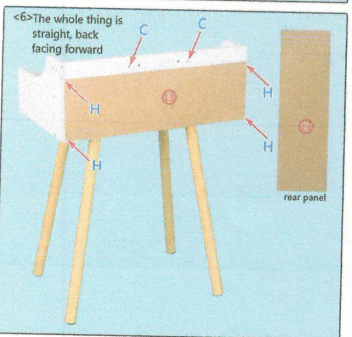
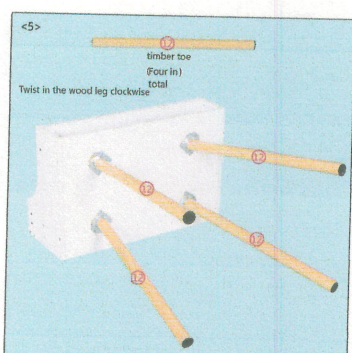
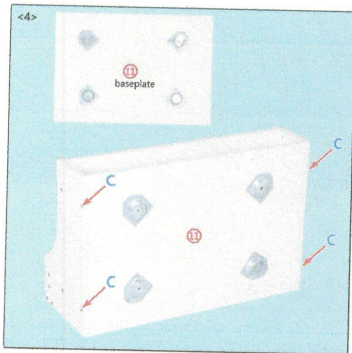
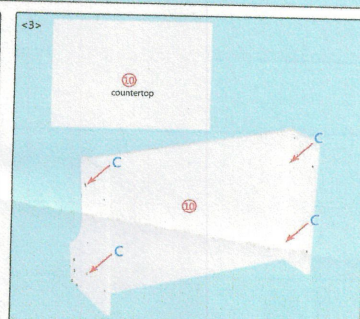
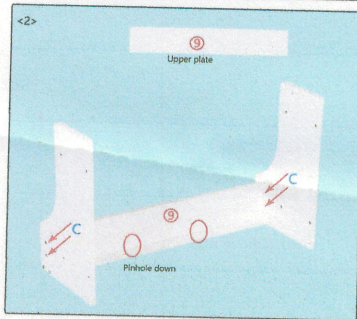
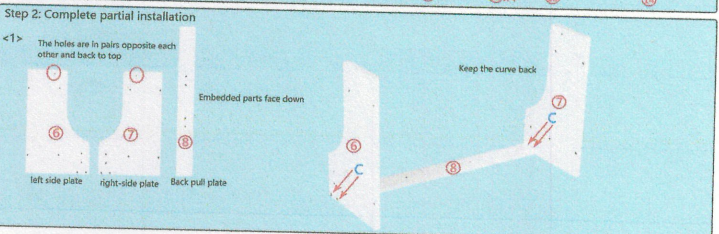
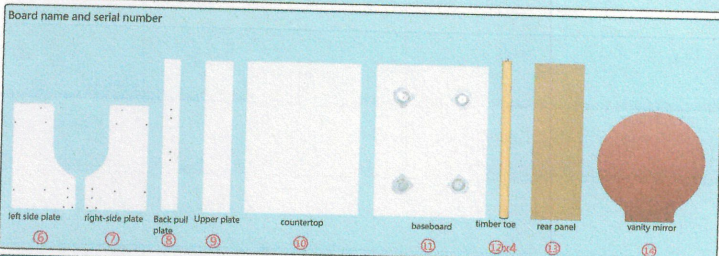
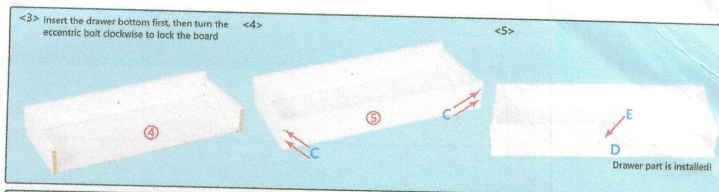
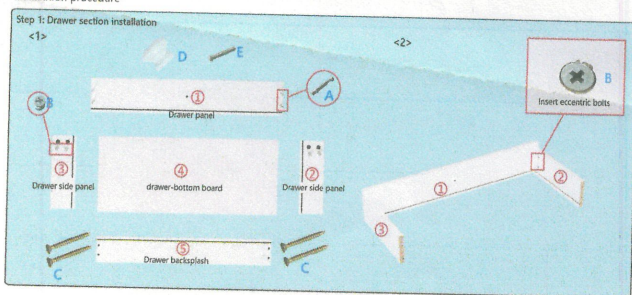
A*4	B*4	C*22	D*1	E*1	F*2	G*2	H*10	I*1

Tips: Screw seven points tight during installation, and then tighten it after all is completed!

Eccentric installation principle:



installation procedure



If the purchase is with lights, plug in the power cord. If the purchase is without lights, there is no such accessory, no need to install

finish plan